

150Watt Pcb Size

UNLESS OTHERWISE SPECIFIED:  
 DIMENSIONS ARE IN MILLIMETERS  
 SURFACE FINISH:  
 TOLERANCES:  
 LINEAR:  
 ANGULAR:

FINISH:

DEBURR AND  
 BREAK SHARP  
 EDGES

DO NOT SCALE DRAWING

REVISION

	NAME	SIGNATURE	DATE	
DRAWN				
CHK'D				
APPV'D				
MFG				
Q.A				

TITLE:	
DWG NO.	150 Watt Pcb Size
MATERIAL:	A4
WEIGHT:	SCALE:1:5 SHEET 1 OF 1

B

B

C

C

D

D

E

E

F

F

A

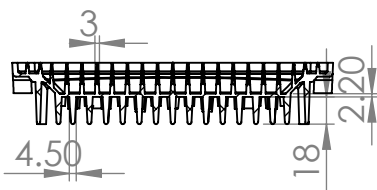
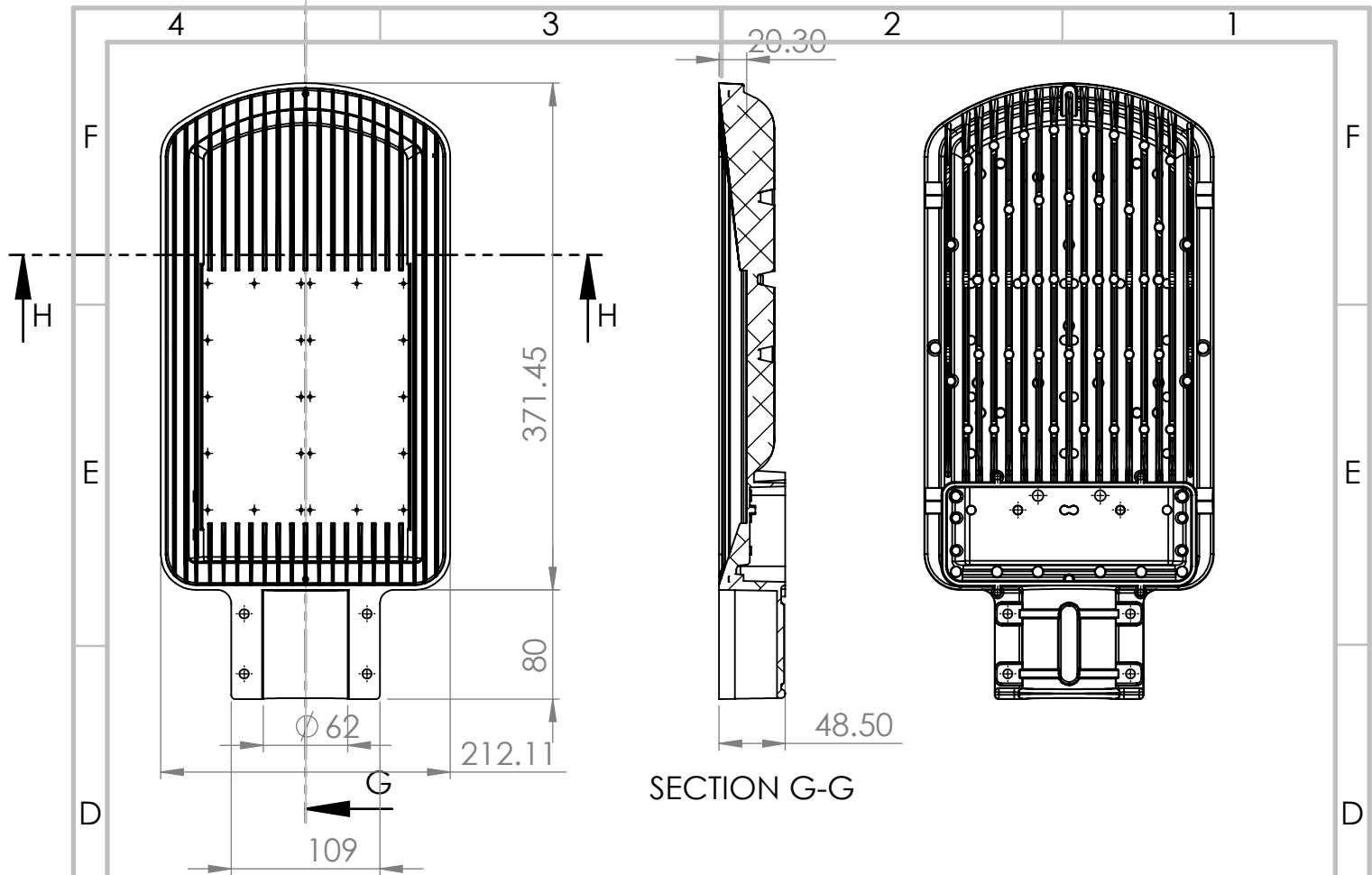
A

4

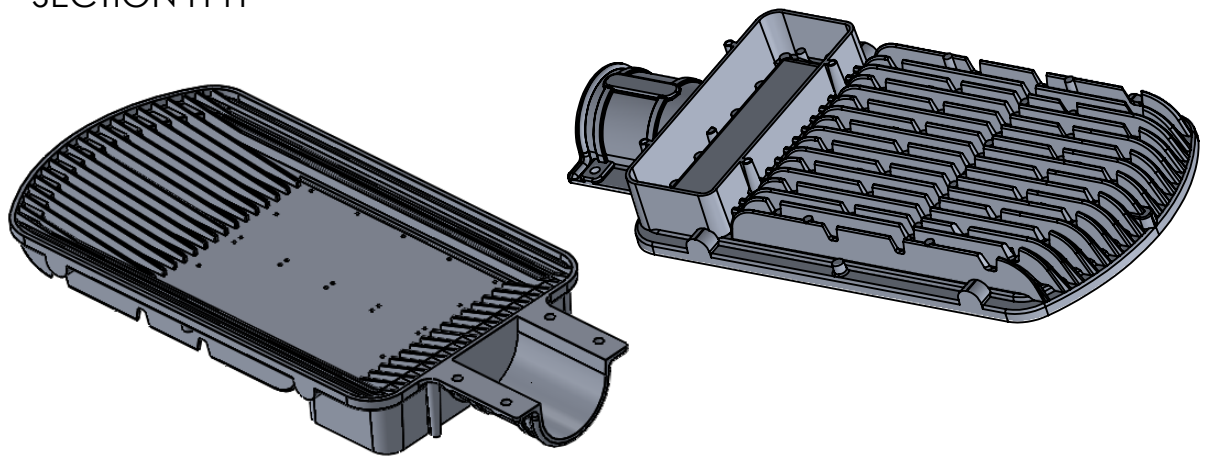
3

2

1



SECTION H-H



UNLESS OTHERWISE SPECIFIED:  
DIMENSIONS ARE IN MILLIMETERS  
SURFACE FINISH:  
TOLERANCES:  
LINEAR:  
ANGULAR:

FINISH:

DEBURR AND  
BREAK SHARP  
EDGES

DO NOT SCALE DRAWING

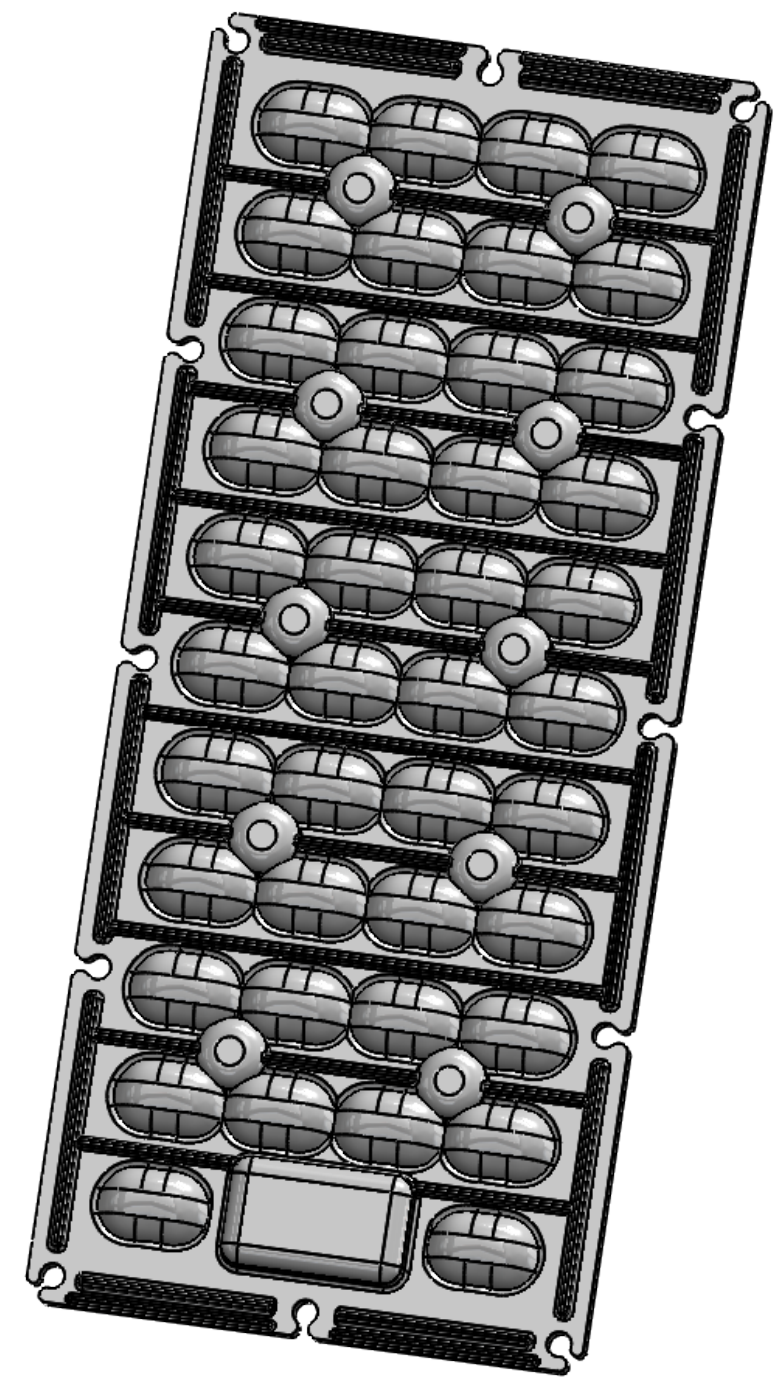
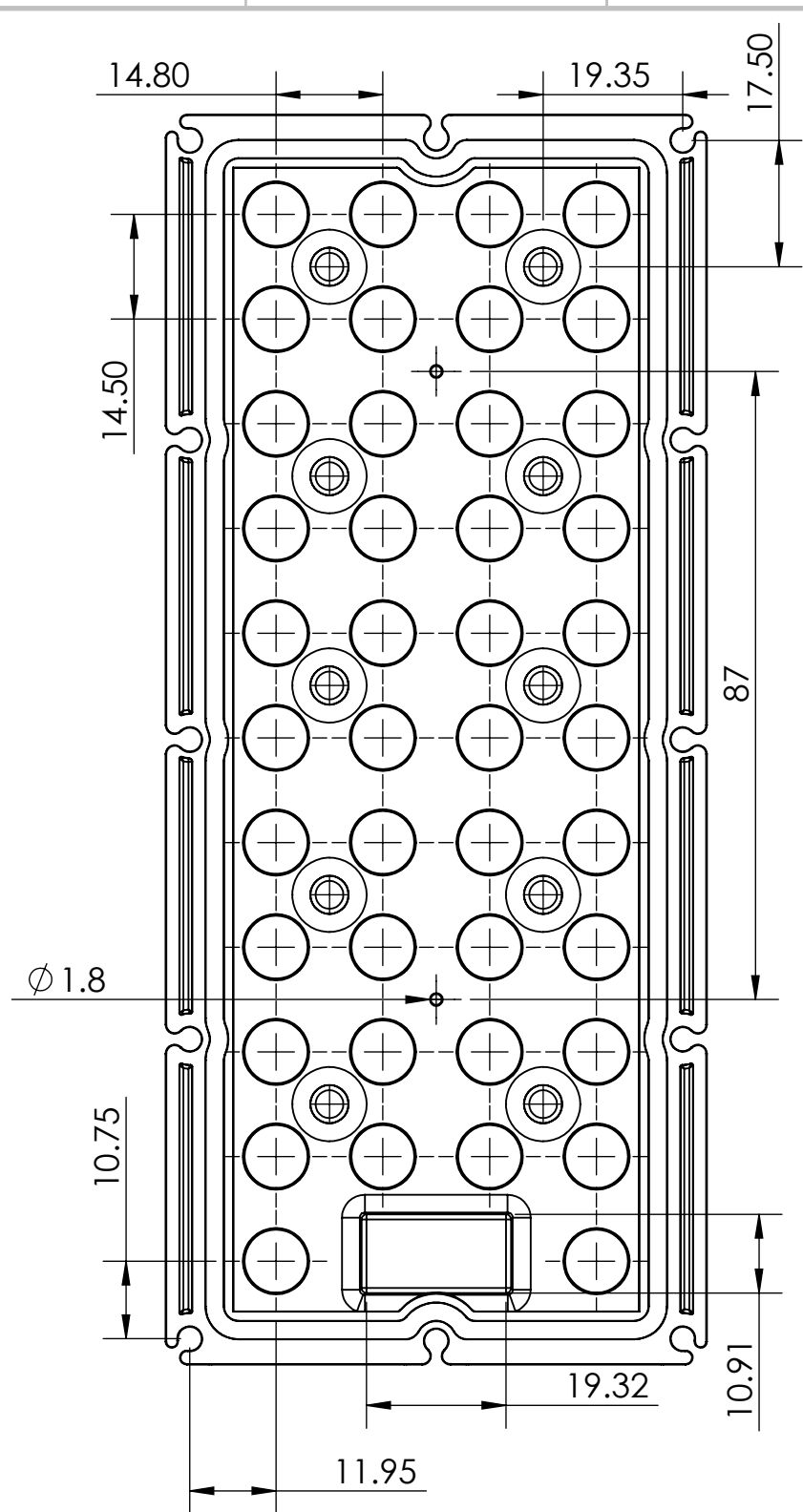
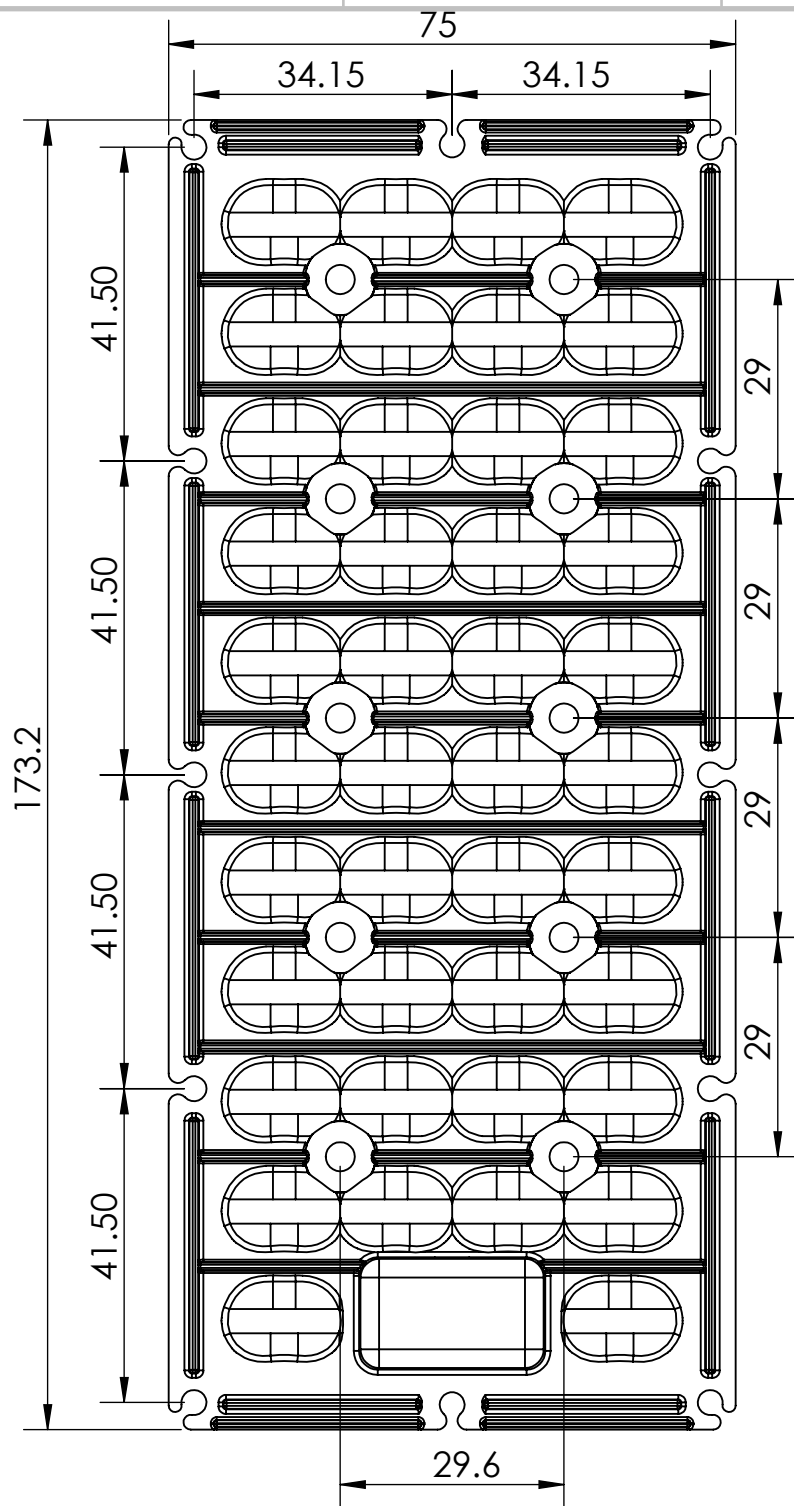
REVISION

	NAME	SIGNATURE	DATE
DRAWN			
CHK'D			
APPV'D			
MFG			
Q.A			

TITLE:	
DWG NO.	
<b>150 Watt street light</b>	
SCALE: 1:5	SHEET 1 OF 1

A4

A



**GENERAL INFORMATION:-**

General Information

1. Lens material - Optical PC
  2. Operating Temperature range  $-40^{\circ}$  ~  $+110^{\circ}$  (Upper Limit  $+130^{\circ}$ )
  3. Storage Temperature range  $-40^{\circ}$  ~  $+110^{\circ}$  (Upper Limit  $+130^{\circ}$  C)
- Average transmittance in visible spectrum 400nm-700nm > 90%

Usage and Maintenance:

1. If necessary, clean lenses with mild soap, water and soft cloth.
2. Never use any commercial cleaning solvents like Alcohol.
3. Handle and install lenses with wearing gloves, skin oils may Damage lenses or its optical characteristics.

**Open Tolrence  $\pm 0.2\text{mm}$**

UNLESS OTHERWISE SPECIFIED: DIMENSIONS ARE IN MILLIMETERS SURFACE FINISH: TOLERANCES: LINEAR: ANGULAR:			DEBURR AND BREAK SHARP EDGES	DO NOT SCALE DRAWING	REVISION
				<b>OPTIKS KARKHANA INDIA PVT. LTD.</b>	
DRAWN	NAME Pradyumna Shandilya	SIGNATURE	DATE 09/01/2019	Part Name:- <b>42 Led Batwing Lens</b>	
CHK'D	Kapil Kaushik		09/01/2019	Drawing Number:- <b>OKIPL-131 Rev.00</b>	
APP'VD	Kapil Kaushik		09/01/2019	Part Number:- <b>OK131-3535-42x1-Typell</b> A3	
MATERIAL: <b>POLYCARBONATE</b>					